



WAIHI EAST SCHOOL
TE KURA RAWHITI O WAIHI



Waihi East Primary School Newsletter
Term 1 Week 3
25 February 2021



Ryan from Northern Districts Cricket came and gave a 2 hour coaching session to these students in preparation for the upcoming Cricket Smash Day.

UPCOMING DATES

- Mar 1 After School Ripa starts.
- Mar 2 Waihi Schools Cluster Swimming Sports.
- Mar 8 Junior Smash Cricket Festival. Waihi College. 9.00am-2.30pm. (pp 9th Mar)
- Mar 9 Class and Individual Photos.
- Mar 10 Class and Individual Photos..
- Mar 10 BOT hui. 5.30pm. All welcome.
- Mar 11 Principal's Assembly. 2.00pm-3.00pm.
- Mar 12 Piwakawaka Trip. Waihi Museum. Trip 1.
- Mar 16 Author Visit. Des Hunt. Rooms 1,2& 3. 9.00am-12.30pm.
- Mar 17 Best Start Programme. 9.30am-11.00am.
- Mar 17 North Cluster Swimming.
- Mar 22 Hearing & Vision Testing. New Entrants.
- Mar 25 Best Start Programme. 11.30am-12.30pm.
- Mar 26 Piwakawaka Trip. Waihi Museum. Trip 2.
- Mar 27 CAR BOOT Sale.
- Mar 30 Surf n Turf. Year 4 & 4. Hamilton Zoo trip.
- Mar 31 Surf n Turf. Year 3 & 4. Surf School.
- Apr 2 Easter Friday. School Closed.
- Apr 5 Easter Monday. School Closed.
- Apr 6 Easter Tuesday. School Closed.
- Apr 7 Parent Teacher Interviews. 1.00pm-5.00pm.
- Apr 8 Parent Teacher Interviews. 3.00pm-7.00pm.
- Apr 8 BOT meeting. 5.30pm. All welcome.

Kia Ora Whanau,

A big thanks to everyone returning forms for our many adventures this term! Thankyou also for the offers of help in the many different ways it takes to run a whanau of nearly 190 precious tamariki - we are so grateful for your support, and recognize the effort and time it takes.

Have you been into the office to see our pepeha wall? If you haven't already, pop in and see the awesome artworks created by Mrs. Hartley's Room 2 children - a stunning depiction of our area, and who we are. Thankyou Room 2!! You will also learn a bit more about the awesome staff who help grow each of our children in different ways.

A big congratulations to all the children who participated up at College for our Kotuku swimming sports - and thanks to Mrs. Matautia for organizing such a fabulous event! We are excited to hear how the dozen or so children, who qualified for the Cluster event, get on next week.

Piwakawaka swimming display, will be in week 5, during class time. Please touch base with your classroom teacher for a time to come along to cheer.

As always, please feel free to make a time to come and chat about what's on top for you and yours.

Nga mihi
Briar

IT'S A GOOD
WEEK TO
HAVE A
GREAT WEEK!

STATIONERY for 2021

Stationery for this year is needed in class now.

If you require a new list please see the office asap or check out our website.

Waihi Stationery does a very good deal for our whanau.

2021 OVERNIGHT CAMPS

If you are thinking of attending any overnight camps with your child this year, we need a Police Vetting form filled in.

No form, then no overnighing at school camps.

Please see the office for your blank form or send in your child to ask for one. These need to be back at school for processing as soon as possible to get them processed in time for camps.

Thanks in Advance.

Year 3/4 30th-31st March. Surf n Turf.

Year 5/6 14 & 15th April Tiritiri Matangi Island Trip.

Year 5/6 11th-14th May Waitawheta Camp.



Tiritiri Matangi Island



WEEKLY NOTICES AND REMINDERS

WELCOME TO OUR NEW STUDENTS! NAU MAI, HAERE MAI WELCOME
We would like to warmly welcome our newest students and their whānau.

Braydon K-Discovery Centre

Enviroschools Update

This year we have kicked off our Enviroschool learning by exploring the topic 'Living Landscapes.' Our tamariki are learning about their local environment and will be encouraged to think of ways to take action to make our place 'greener.' We are starting up our Enviro Club this week for our Waihi East School 'Eco Warriors' who want to do even more to support sustainability in our school.

Becoming an Enviroschool is a long term commitment by our kura, empowering our children to engage in a sustainable future, developing projects for not only our school but also the wider community. Check out the Enviroschools website for further information - www.enviroschools.org.nz.

We would love to hear from you if you think you'd like to support us in any way - gardening, worm farms, composting, pig buckets etc. Please email, or come and have a chat with Sarah Cannell - scan-nell@east.school.nz

TOP TIPS TO REDUCE WASTE GOING TO LANDFILL

REDUCE PREVENT WASTE

Say no to unnecessary single-use items like coffee cups and straws, and think twice before you buy something new.

Food waste is a huge component:
157,389 tonnes of food waste every year goes to landfill in New Zealand.

That discarded food is worth
\$1.17 billion EACH YEAR

Love Food Hate Waste has great tips on reducing food waste
lovefoodhatewaste.co.nz

REUSE

Investing in a few handy items like a reusable water bottle, a keep cup and a stash of reusable bags for your groceries can make a huge dent in your waste footprint.

And why not get creative and find ways to upcycle and reuse objects that you might otherwise throw away?

RECYCLE

Recycling is a great way to ensure that materials like plastic, glass and aluminium can be used over and over again and keep them out of landfill.

But it's essential that you recycle right - by rinsing your recyclables clean and following our Council's recycling guidance on the preceding pages.

The Ministry for the Environment has great tips on how to work towards a waste-free future
bit.ly/3mDMCKG

BEST START PROGRAMME FOR NEW ENTRANTS

If your New Entrant child has enrolled this term, or will be enrolling this term, please contact Briar about securing your place in our awesome workshops.

Best start Waihi East

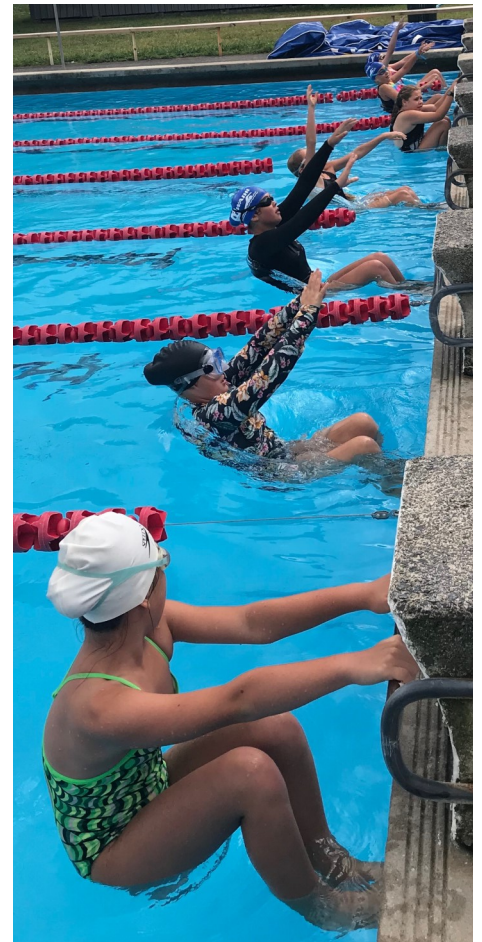
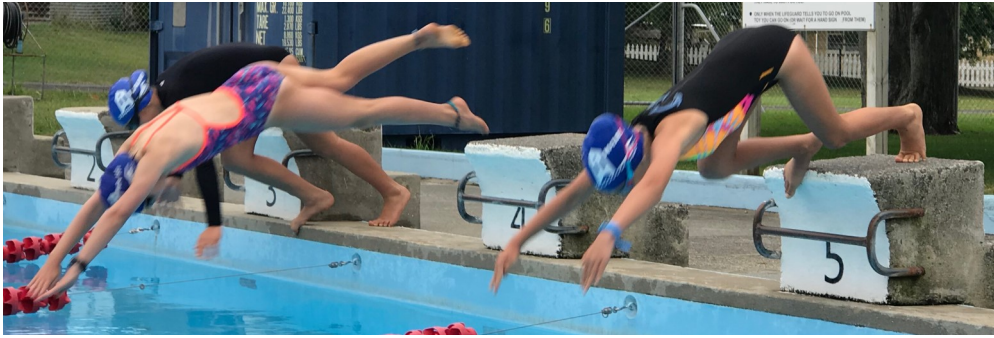
Wed 17 March 9-30am-11.00am.

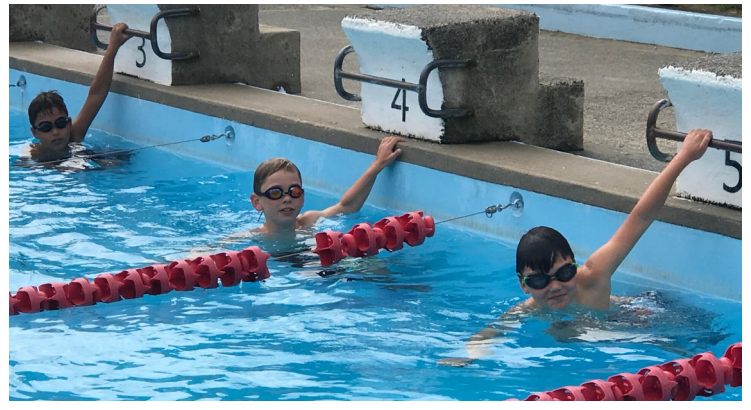
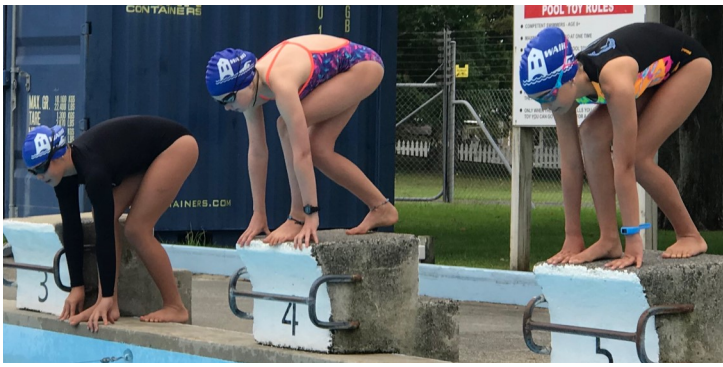
Thurs 25 March 11.30am-12.30pm.

Contact Briar on principal@east.school.nz or 863 8693.



SWIMMING SPORTS





STAFF EMAIL ADDRESSES

Neroli Matautia
 Dorette Hartley
 Jo Derham
 Tammy Stevens
 Jude Fletcher
 Caitlin Kneebone
 Sarah Cannell
 Maren Johansen
 Brendon Carroll
 Briar Scott
 Vanessa Maunder
 Sharon Samson
 Leann Bellamy
 Michelle Burr
 Tanya Giles

nmatautia@east.school.nz
 dhartley@east.school.nz
 jderham@east.school.nz
 tstevens@east.school.nz
 jfletcher@east.school.nz
 ckneebone@east.school.nz
 scannell@east.school.nz
 mjohansen@east.school.nz
 bcarroll@east.school.nz
 principal@east.school.nz
 vmaunder@east.school.nz
 office@east.school.nz
 lbellamy@east.school.nz
 mburr@east.school.nz
 tgiles@east.school.nz

Room 1
 Room 2
 Room 3
 Room 4
 Room 5
 Discovery Centre
 Discovery Centre
 Room 8
 Room 9
 Principal
 Deputy Principal
 Admin
 Support Staff
 Support Staff
 Support Staff

Seasons for Growth

CHILDREN & YOUNG PEOPLE'S PROGRAM



An innovative grief and loss program that uses the imagery of the seasons to illustrate the experience of grief.

The program was first developed 20 years ago and has been revised and updated to incorporate new evidence and ensure that it continues to provide relevant and valuable experience for participants.

It does not provide counselling or therapy.



What does it do?

Seasons for Growth aims to strengthen the social and emotional wellbeing of children and young people (aged 6-18) who are dealing with significant life changes by:

- Exploring the impact of the change and loss on everyday life
- Learning new ways to respond to these changes

Who is it for?

Anyone who is living with the effects of change and loss. Many factors can cause change such as:

- Friends can come and go
- Loss of someone or something you love
- Parents and families separate
- Moving to a new place
- Impact of illness
- Family work-life changes

Change affects everyone differently, as does grief. It's the impact of the change, not the event itself that *Seasons for Growth* focuses on.

We suggest that anyone affected by bereavement wait 6-12 months before participating in a *Seasons for Growth* program.

FIREWOOD

Large trailer load

Kindly donated by the Bjerring Family
\$2 per number or 3 for \$5

1	2	3	4	5	6	7	8	9	10
11	12	13	14	15	16	17	18	19	20
21	22	23	24	25	26	27	28	29	30
31	32	33	34	35	36	37	38	39	40
41	42	43	44	45	46	47	48	49	50
51	52	53	54	55	56	57	58	59	60
61	62	63	64	65	66	67	68	69	70
71	72	73	74	75	76	77	78	79	80
81	82	83	84	85	86	87	88	89	90
91	92	93	94	95	96	97	98	99	100

FIREWOOD RAFFLE

We have had a trailer load of firewood kindly donated by the Bjerring family and are selling raffle tickets at the office for \$2 each or 3 for \$5. It's never too early to get in the firewood!

WANTED—RUGBY BOOTS

Mrs. Matautia is after old, 2nd hand rugby boots to be sold as a fundraiser cheaply at the rugby club. If you are willing to donate unused pairs of rugby boots that are sitting in your garage and are no longer used, please bring to Room 1 or contact Mrs. Matautia.



Waihi

BOMBING COMP

**EPIC
PRIZES!!!
ALL
AGES**

FEBRUARY 28TH, 2021

11 AM - 2PM

@COFFEES CREEK

WELLINGTON STREET, WAIHI

\$5 ENTRY - INCLUDES A SAUSAGE & A JUICEY

DR@PBOMBZ
EATSLEEPBOMB!REPEAT

angels in action
made with PosterMyWall.com

THANKS TO OUR GREAT DUFFY BOOKS SUPPORTERS.

lawn-mowing

Nani de Ocampo & Ruth Scott
Owner/Operators

07 863 7320 HOME
021 127 0635 MOBILE
0800 800 286 TOLL FREE

waihi.crewcut@gmail.com EMAIL

CrewcutWaihi

www.crewcut.co.nz WEB

CREWCUT

LAWN & GARDEN

THANKS TO OUR GREAT DUFFY BOOKS SUPPORTERS.
Your donations mean more books for kids.



CLARK TREE CARE

TREE SERVICES

- SPECIALIST IN TREE PRUNING AND REMOVAL
- STUMP GRINDING
- SECTION CLEARING
- HEDGE TRIMMING
- QUALIFIED ARBORIST



JOEL CLARK
0212366713

WaihiFamilyDoctors 

"Providing friendly and Quality healthcare from our family to yours"

Phone (07) 863 2112
Phone the same number for out of hours care

Opening hours: Monday – Friday
8:30am – 5:00pm

Burrs
FURNITURE MOVERS

*Small or large moves. Home or Business.
North Island wide. Packing Service.
Available seven days.*

MIKE BURR 0800 863 8510 • 027 269 3160
info@burrs.co.nz • www.burrs.co.nz

Rachael Alley - Team Leader
Thermomix Consultant

The Mix New Zealand Pty Ltd
ID 123752

021616358
rachaelalley@gmail.com



thermomix



gold fm

"Hear the difference"

Waihi 96.4	Waihi Beach 99.4
Paeroa 88.0	Coromandel 96.4
Thames 88.0	Matarangi 99.1
Cook's Beach 99.1	Whitianga 99.1

www.goldfm.co.nz  facebook

Waihi Health Centre 

*Caring for our Community
since 1988*

2 School Lane, Waihi | Ph: 07 863 8195
www.waihihealthcentre.co.nz | Find us on Facebook



Ryan Giles
Mortgage Adviser

T 07 863 3111 **M** 022 077 5572
E ryan.giles@mikepero.co.nz
A 352 Te Rapa Road, Hamilton 3200
W mikepero.co.nz/ryan-giles



mike Pero
Mortgages • Insurance • Finance

Principal: Briar Scott
Ph: 07 863 8693
Absentees: 021 0258 4817
Email Office for general enquires:
office@east.school.nz
Email: principal@east.school.nz
www.waihi-east.school.nz
Waihi East Primary School,
8 Donnelly Street, WAIHI 3610
PO Box 129, WAIHI 3641
Copyright © 2016 WAIHI EAST SCHOOL.
All rights reserved.