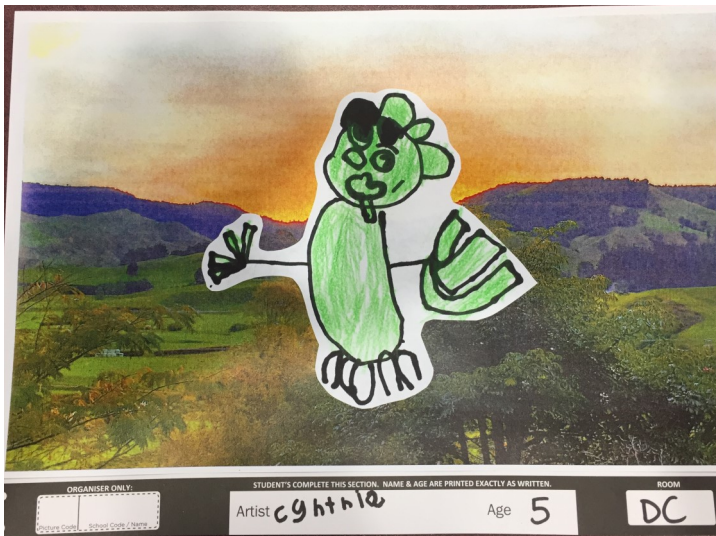
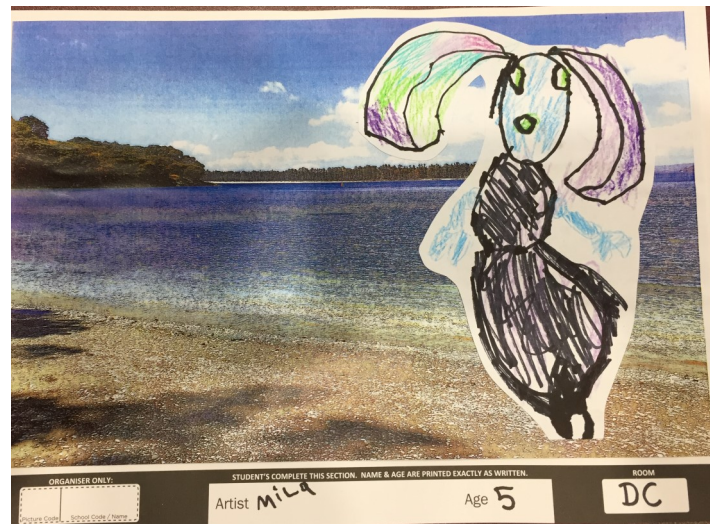
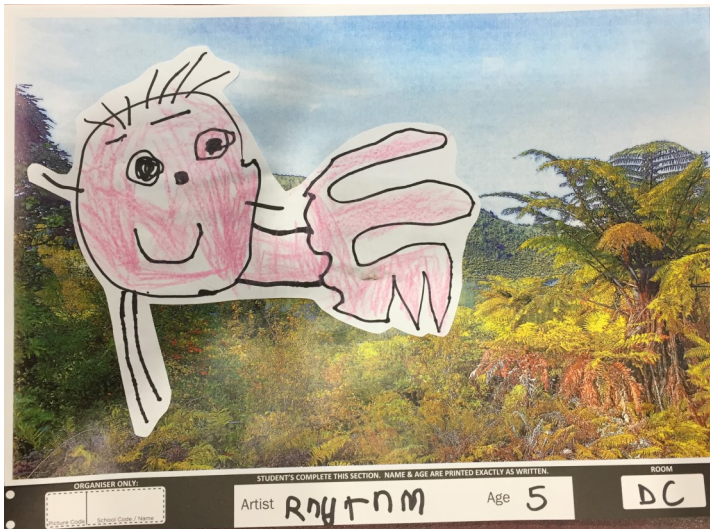




WAIHI EAST SCHOOL
TE KURA RAWHITI O WAIHI



Waihi East Primary School Newsletter
Term 4 Week 1
21 October 2021



Discovery Centre Calendars

UPCOMING DATES

- Oct 18– 22 Life Education (Harold) visiting.
- Oct 25 Labour Day. School Closed.
- Oct 26 Teacher Only day. School Closed.
- Oct 28 National Shake Out day.
- Nov 1 East School Agriculture Day.
- Nov 4 East School Athletics.
- Nov 5 School Fun Run fundraiser.
- Nov 5 First day to order Fun Run Prizes.
- Nov 8 Funky Fun Day. Year 1 & 2.
- Nov 10 Waihi College Parent Information Evening for 2022 year 7 Whanau. 5.15pm-6pm.
- Nov 11 Cluster Athletics. TBC.
- Nov 12 Last day to order Fun Run Prizes.

A huge, warm and wonderful welcome back to term 4!
This is the term on rocket fuel, so buckle in!

We are really pleased to welcome our student teachers to school, to complete their practicum with us - we are super fortunate to have Matua Matt, Whaea Polly and Mrs. Burr join us everyday for 3 weeks, and Miss Ny for 5 weeks! Please make them feel welcome, we are so glad they are here!

Our Mihi Whakatau was just lovely on Monday - it is such a gorgeous way to welcome all our students back to school, and introduce our new families to our ways. Big thanks to the tamariki (students), who make this all happen - we are so proud of you!

This term, with the alert levels potentially changing (hopefully downwards), our plans for events will be made according to the the level the event is held in. As these are so changeable, I will let you know where possible, the week prior, to events, what the regulations look like.

In week 3 we have Agriculture day, Athletics and our Fun Run. I will communicate what this looks like, in terms of adults and numbers allowed onsite, along with protocols late next week.

Our calendar is looking full! Please keep an eye on the newsletter, texts sent out and Facebook for changes and updates.

This term is our Sun Smart term - please help your child dig out their named hat, so they can bring it daily to school. As the weather warms, the clothes and shoes start stripping off, so we will be encouraging children (robustly) to put their belongings into their bags when they remove them. Please help us, by insisting your child finds and stores their own belongings, our lovely teachers are under the pump and finding children's gear for them (outside of class routines) is very time consuming, and not a great use of their time.

We find precious toys and items are popped down and picked up, and sometimes go missing, so it would be appreciated if these items remain at home please - thanks so much for your support!

Our tamariki (students) are training hard for Athletics coming up - we are certainly making the most of of the sunshine - it's so cool to hear their excited chatter and see their happy smiles doing things they love!



Lastly, a reminder about the weekend coming:

Nga mihi,
Briar

WELCOME TO OUR NEW FAMILIES! NAU MAI, HAERE MAI

We would like to warmly welcome our newest students and their whānau.

Finn B—Discovery Centre
Rhyder AS—Room 3
Chloe W—Discovery Centre
Braxton D—Discovery Centre
Levi V—Discovery Centre
Braxton H—Discovery Centre

WEEKLY NOTICES AND REMINDERS

AGRICULTURE DAY

This year Waihi East School's Agriculture Day is being held on Monday 1st November.

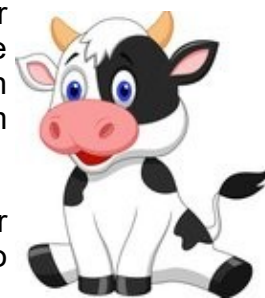
All children will be making an animal to display using recycled materials (Linking into the EnviroSchools zero waste learning). These can come from home or be sourced from our makerspace. We will start this work at the beginning of term 4.

The children not showing their live animals are also encouraged to make a nature product on the day, these materials will come from home with a purpose to use objects from outside. Some ideas for nature products include: fairy house, miniature garden, rock painting, flower display or garden art.



The animals and nature art will be displayed in classrooms for viewing starting at 11:40am on Monday 1st November, you are invited to join your child's class as they will be moving through each of the classrooms in the following order starting in Room 1, 2, 3, 4, 8, DC, 5 and 9.

We will also be having a silent cake auction to raise funds for extracurricular activities. If your family would like to make one to donate, please let us know.



SCHOOL FUN RUN

Thank you all for creating a School Fun Run profile! There is a way to go yet, so please keep supporting us!

Please remember to keep sharing your online fundraising link that can be shared via text, social media and email. Our top 5 fundraisers will be having lunch on us on Friday! Congratulations Judah, Boston, Ritchie, Braxton B & Marley-Jae.



Students who raise funds can apply for their prizes from Nov 5 to Nov 12. Check out the prizes on offer from the brochure sent home last term

Thanks so much for your efforts!!
Briar

TERM 3/4 FUNDRAISER

Personalised Artwork Calendars, Cards, Diaries, Mouse Mats & Sketch Pads

Order forms have gone home this week .
Calendars are \$15 each, Pack of 8 cards \$12, Diaries \$16, Mouse mats \$15, Sketch Pad \$14.
We have a few examples of what's on offer in the office. Please pop in to check them out.
All orders need to be placed online. We cannot accept eftpos for this fundraiser. Sorry.



Bank Account details for any and all online payments.
Please use your surname as a reference.

020472 0084492-00



ABSENTEE NOTIFICATION

Just a reminder that you can send your absentee notification by text to the school cell phone
021 0258 4817



Principal's Awards



PRINCIPAL'S AWARDS

Congratulations to the following students who have received a Principal's Awards for Term 2
These students have displayed one or more of our School values this term.

Responsibility; Josiah M, Hunter W, Zoe FP, Briar H, Jenny Y, Tyler S, Mason V, Sylvie BJR, Madison M, Indie N, Isla W, Nathan H, Jack G, Scarlett S, Raniera H, Mataio T, Eden M, Henry O.

Caring; Olivia P, Paitoa P, Ambre S, Mataio T, Henry O.

Respectful; Olivia P, Hunter W, Patrick PS, Truman A, Zach B, Lewis D, Ambre S.

BEST START PROGRAMME FOR NEW ENTRANTS

If your New Entrant child has enrolled this term, or will be enrolling this term, please contact Briar about securing your place in our awesome workshops.

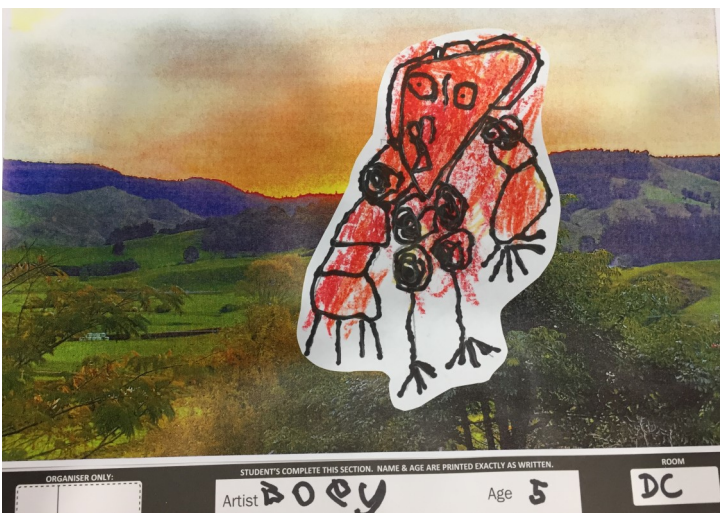
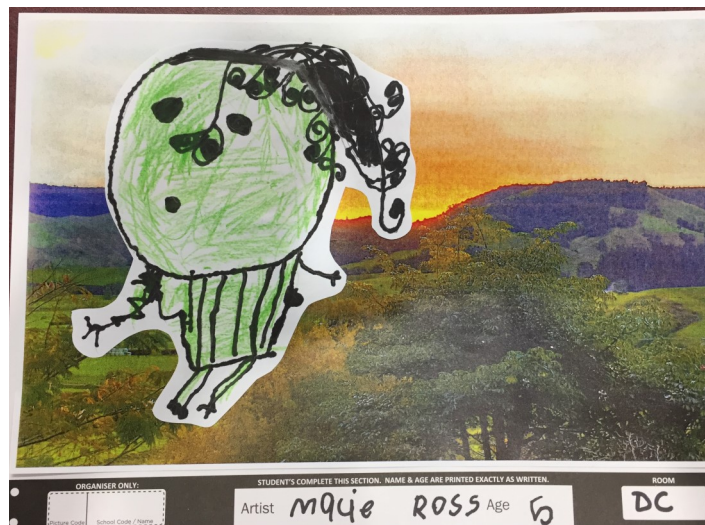
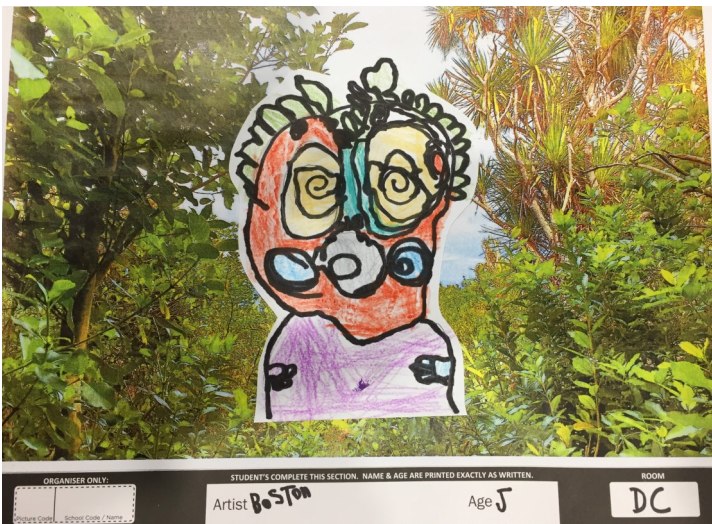
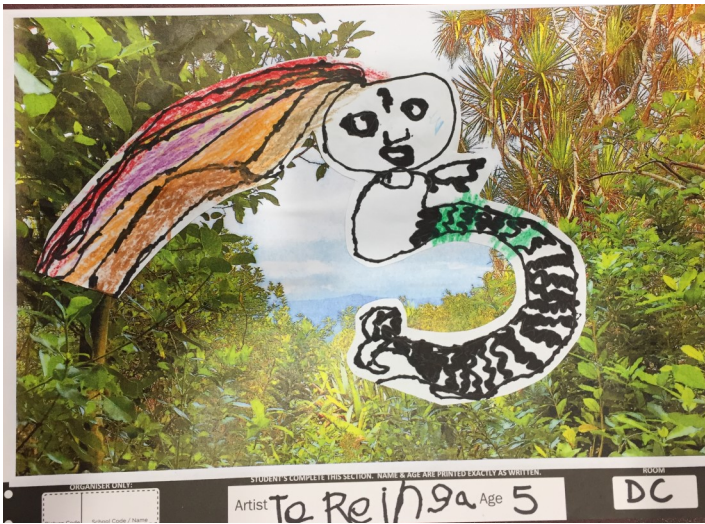
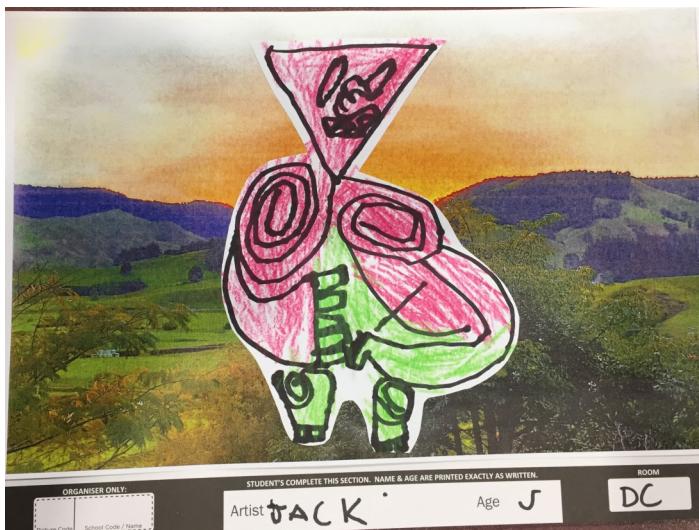
Best Start Waihi East

Thurs 18 November 11-30am-12.30pm.
Weds 23 November 11.30am-12.30pm.

Contact Briar on principal@east.school.nz
or 863 8693.



Discovery Centre Calendars



COME JOIN US!

WE WARMLY WELCOME NEW FAMILIES TO JOIN THE FUN IN OUR JUNIOR SURF PROGRAMME

- a fun way to learn about beach safety
- stay active
- build confidence
- make friends
- be introduced to surf sport
- have a whole lot of fun!
- 5-13yrs

Waihi Beach Junior Surf

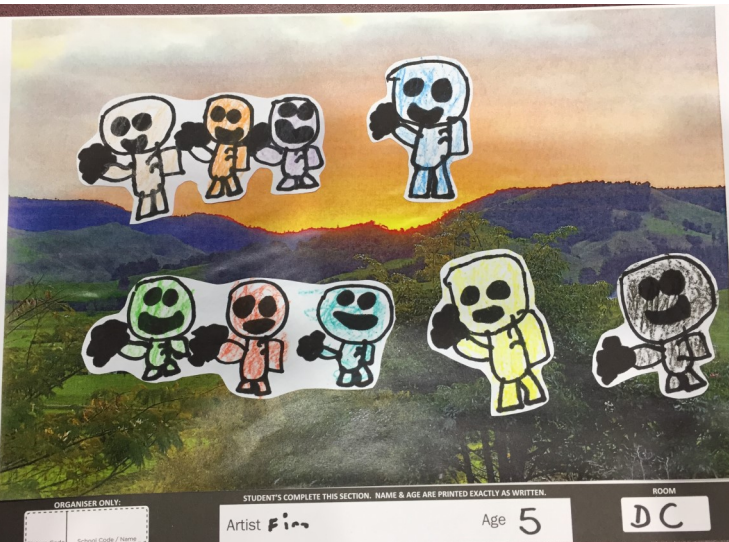
Every Sunday morning at 10am
Starting Labour Weekend!

Due to Covid requirements, if you would like to come to our Opening Day please RSVP Link on our facebook page.

"Junior Surf is so much fun, but so much more too. It's taught our kids so many life skills. Water safety yes, but also confidence, self-belief and resilience!" - Andrea

Waihi Beach
LIFEGUARD SERVICES INC.
www.waihibeachlifeguards.co.nz

@waihibeachjuniorsurf



Looking for a career change?
Love working with children?



Save time by not sitting in traffic and earn up to \$1000 per week while working from home



- FREE ECE Level 4 Training
- FREE Flu Jab
- FREE First Aid Certificate
- FREE Police Vetting
- FREE Annual Subscription to the Homebased Association
- Educa Online Portfolio Support
- Playgroups and Excursions
- Toy Library

Looking for Quality
Childcare?

- Small Group Size
- Personal Relationships
- Community Adventures
- Subsidised Fees*

p: 0800 536 627
w: jemmas.co.nz
e: info@jemmas.co.nz

* Terms and Conditions Apply



JEMMAS
Home-based Education and Childcare

WAIHI TENNIS CLUB INC
MORGAN PARK
JUNIOR TENNIS

OPENING DAY 2021 - MONDAY 18th OCTOBER
PROFESSIONAL COACHING EVERY WEEK
PRIMARY SCHOOL AND COLLEGE AGES

AFTER SCHOOL FROM 4.30 PM TO 7.30 PM. HOURLY SESSIONS
WILL BE ORGANISED DURING THIS TIME PERIOD, DEPENDING
ON AGE AND ABILITY.

COACHING TIMES
WILL BE ADVISED AFTER REGISTRATION.

REGISTER NOW BY EMAIL BACK TO SUE O'BRIEN WITH NAMES
AND AGES - sueden@extra.co.nz or Text 0273112508

THIS WILL BE FOR 9 WEEKS.
SESSIONS STILL HELD IF IT RAINS AS WE WILL USE THE
WAIHI EVENTS CENTRE. (PLEASE COME DOWN TO THE ROOMS
IF YOU ARE DROPPING OFF CHILDREN SO WE ARE ALL AWARE
OF WHAT IS HAPPENING ON THE DAY)

COST WILL BE \$20 PER PLAYER FOR THIS COURSE, TO BE PAID
ON FIRST DAY. (A FURTHER COURSE OF 7 WEEKS WILL BE
AVAILABLE FROM 14/2/2022)

RACKETS ARE AVAILABLE.



GIVE IT A GO PROGRAMME

6 WEEKS

YEAR 1-4



CATCH! THROW! STRIKE!

LOCATION	DAY	START DATE	TIME
Pohlan Park, Matamata	Monday	18 Oct 2021	4.00pm
Te Aroha College, Te Aroha	Wednesday	27 Oct 2021	4.30pm
Rhodes Park, Thames	Friday	29 Oct 2021	4.00pm
Moewai Sports Park, Whitianga	Monday	01 Nov 2021	3.30pm
Hauraki Plains College, Ngatea	Monday	01 Nov 2021	4.00pm
Paeroa College, Paeroa	Wednesday	03 Nov 2021	4.30pm
Waihi College, Waihi	Friday	05 Nov 2021	4.00pm
Morrinsville Recreation Ground	Friday	05 Nov 2021	4.30pm
Albert Park, Te Awamutu	Friday	05 Nov 2021	5.30pm
John Kerkof Park, Cambridge	Friday	05 Nov 2021	5.30pm
Whangamata Area School	Wednesday	10 Nov 2021	3.15pm

REGISTER VIA NDCRICKET.CO.NZ/PLAY - TURN OVER FOR MORE INFORMATION

WAIHI DRAMA SOCIETY
TERM 4- 2021
(at community Level 1)

“STORYTIME THEATRE”
fun acting classes for 8-11 yr olds
(primary school age)

Starts Term 4 (20th Oct) -
WEDNESDAYS 4pm to 5:30pm
at the Boyd Rd Theatre

One class a week all term -of fun
character, movement and confidence .
\$50 per student.

This class will be open to any Primary
school students (8-11yrs) if we get to
Level 1 living by Term 4.

Please email
youththeatrewaihi@gmail.com
to register your interest.





ATHLETICS

Want to learn how to run, jump or throw?

The skills you learn in athletics are the perfect foundation for almost any sport.

Every student can give athletics a go.

Our local athletics club Waihi Amateur Athletics Club is welcoming new members now and we encourage students to get involved and get active.

Contact details for all athletics clubs nationwide are available here athletics.org.nz/FindaClub and become a member.

**RUN, JUMP OR THROW?
GIVE IT A GO!**

To find out about your local club, sprint to athletics.org.nz.

Thanks to our partners  

THANKS TO OUR GREAT DUFFY BOOKS SUPPORTERS.

lawn-mowing

Nani de Ocampo & Ruth Scott
Owner/Operators

07 863 7320 HOME
021 127 0635 MOBILE
0800 800 286 TOLL FREE

waihi.crewcut@gmail.com EMAIL

CrewcutWaihi 

www.crewcut.co.nz WEB

CREWCUT

LAWN & GARDEN

THANKS TO OUR GREAT DUFFY BOOKS SUPPORTERS.
Your donations mean more books for kids.



TREE SERVICES

- SPECIALIST IN TREE PRUNING AND REMOVAL
- STUMP GRINDING
- SECTION CLEARING
- HEDGE TRIMMING
- QUALIFIED ARBORIST

CLARK TREE CARE



NZARB
New Zealand Arboricultural Association Inc.

JOEL CLARK
0212366713

WaihiFamilyDoctors 

"Providing friendly and Quality healthcare from our family to yours"

Phone (07) 863 2112
Phone the same number for out of hours care

Opening hours: Monday – Friday
8:30am – 5:00pm



Burrs
FURNITURE MOVERS

Small or large moves. Home or Business.
North Island wide. Packing Service.
Available seven days.

MIKE BURR 0800 863 8510 • 027 269 3160
info@burrs.co.nz • www.burrs.co.nz



gold fm

"Hear the difference"

Waihi 96.4	Waihi Beach 99.4
Paeroa 88.0	Coromandel 96.4
Thames 88.0	Matarangi 99.1
Cook's Beach 99.1	Whitianga 99.1

www.goldfm.co.nz  facebook



Ryan Giles
Mortgage Adviser

T 07 863 3111 **M** 022 077 5572
E ryan.giles@mikepero.co.nz
A 352 Te Rapa Road, Hamilton 3200
W mikepero.co.nz/ryan-giles



mike Pero
Mortgages • Insurance • Finance

Principal: Briar Scott
Ph:07 863 8693 Absentees: 021 0258 4817
Email Office for general enquires: office@east.school.nz
Email: principal@east.school.nz www.waihieast.school.nz
Waihi East Primary School, 8 Donnelly Street, WAIHI 3610
PO Box 129, WAIHI 3641
Copyright © 2016 WAIHI EAST SCHOOL.
All rights reserved.