



WAIHI EAST SCHOOL
TE KURA RAWHITI O WAIHI



Waihi East Primary School Newsletter
Term 4 Week 3
4 November 2021



UPCOMING DATES

- Nov 4 Athletics Day—Results in next weeks newsletter.
- Nov 5 School Fun Run/Obstacle Course fundraiser.**
- Nov 5 First day to order Fun Run Prizes.
- Nov 10 Waihi College Parent Information Evening for 2022 year 7 Whanau. 5.15pm-6pm.
- Nov 12 Last day to order Fun Run Prizes.
- Nov 12 Principal's Assembly. 1.30pm.
- Nov 17 Kapahaka trip.
- Nov 18 Best Start Programme. 11.30am.
- Nov 18 Pepeha & Pizza . 3pm-5pm & 5.15pm-7pm.
- Nov 23 Best Start Programme. 11.30am.
- Dec 8 Principal's Awards.
- Dec 9 Farewell Assembly for Ms. Johansen.
- Dec 10 Teacher Only Day.**
- Dec 13 Year 6 Waimarino Trip.
- Dec 16 Prizegiving. 11am.
- Dec 17 Last day of Term 4.

WEEKLY NOTICES AND REMINDERS

SCHOOL FUN RUN/OBSTACLE COURSE

This is happening tomorrow!
11.30am start

Please bring a old white or pale coloured t-shirt to run in.

Also please bring a towel and glasses or goggles.

Parents, you are welcome to come and watch, however to ensure Ministry of Education expectations are met, please stick to the following times.

Piwakawaka 11.30am – 12.15pm.

Kotuku 12.15pm-1.00pm.

Wearing of masks outdoors is encouraged and we would prefer if they were worn indoors too.
Please sign in at the office.

Congratulations to all our students who have raised funds for East School through the fun run page. We will have a total very soon for this. Prizes can be selected online from tomorrow to 12 November.

All students with a profile will be notified by email that the only way to order their prize is through their profile page.

To order your prize, you simply need to log in during the prize ordering window. Once you log in, a pop up will appear advising you to *Order Prizes*.

This will then allow you to select your prize.

You have from your *Prize Order Open* (5 November) date until the *Prize Order Close* (12 November) date to submit your prize order online.



TERM 4 FUNDRAISER

Personalised Artwork Calendars, Cards, Diaries, Mouse Mats & Sketch Pads

Order forms have gone home with your individual order code. If your child has lost this, we have a record at school. Just pop into the office or email [office @east.school.nz](mailto:office@east.school.nz) for your code.

Calendars are \$15 each, Pack of 8 cards \$12,

Diaries \$16, Mouse mats \$15, Sketch Pad \$14.

We have a few examples of what's on offer in the office. Please pop in to check them out.

All orders need to be placed online. We cannot accept eftpos or cash for this fundraiser. Sorry.

Orders close on November 22nd so get in quick!!

This is so the orders will be back in time before the end of the year!



Bank Account details for any and all online payments.
Please use your surname as a reference.

020472 0084492-00



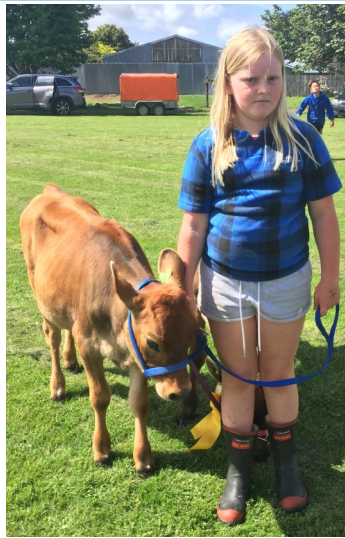
ABSENTEE NOTIFICATION

Just a reminder that you can send your absentee notification by text to the school cell phone

021 0258 4817



AGRICULTURE DAY



2021 AGRICULTURAL DAY RESULTS

TROPHIES

Best First Calf	Tahlia B
Best Leading calf	Leah K
Best Reared calf	Tahlia B
Champion Breed type	Ethan C
Aggregate points for calf	Tamsin D
Champion Junior Lamb	Fern G
Champion Senior Lamb	Flynn A
Champion Lamb rearing	Fern G
Beef type trophy	Maia G
Champion Goat	Reuben C

CALVES

Champion Leading	Leah K
Reserve Champion Leading	Tahlia B
Champion Rearing	Tahlia B
Reserve Champion Rearing	Leah K
Champion Breed Beef	Maia G
Champion First time with a calf	Tahlia B
Reserve champion First time with a calf	Freya C
Champion Breed Dairy	Ethan C
Reserve Champion Beed Dairy	Leah K

LAMB

Champion Leading	Flynn A
Reserve Champion Leading	Cole W
Champion Calling	Flynn A
Reserve Champion Calling	Elijah d
Champion Rearing	Fern G
Reserve Champion Rearing	Kate G
Champion first time with a lamb	Addison G
Reserve Champion first time with a lamb	Rhythm M

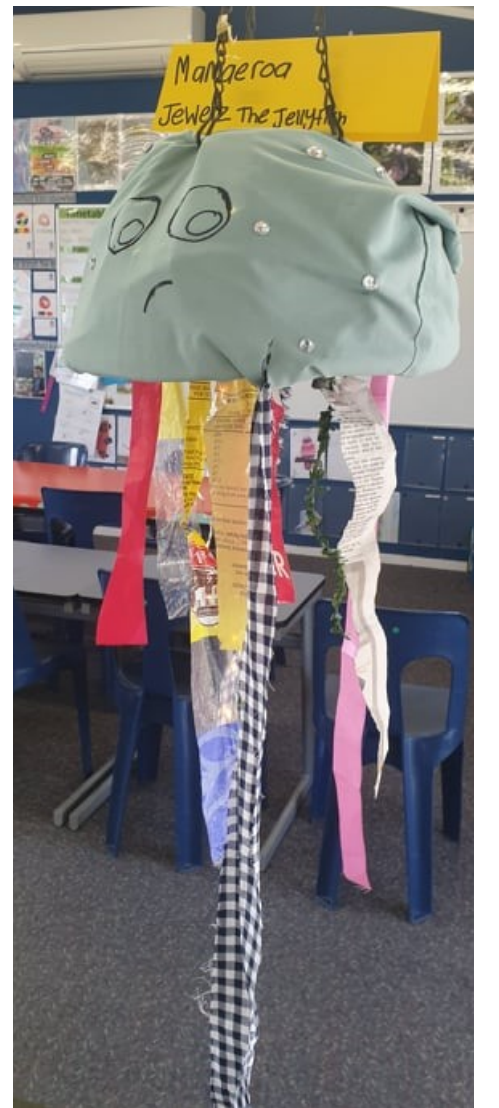
THANK YOU

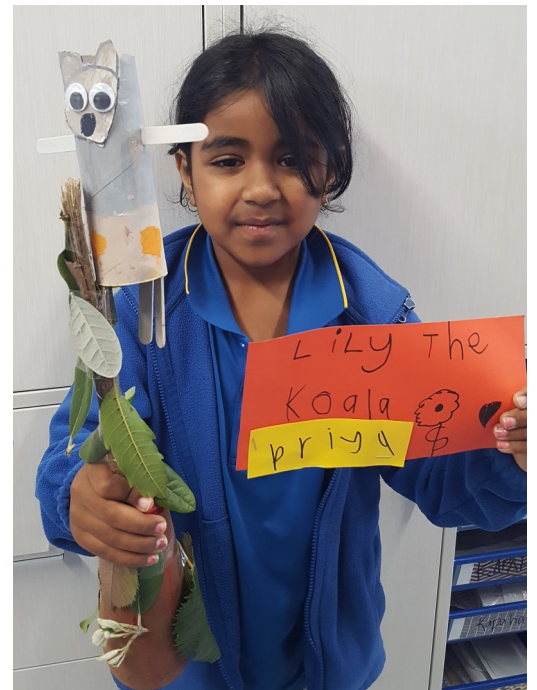
A huge thanks to Paul Madsen from Harcourts for once again sponsoring our AG Day ribbons. AG Day wouldn't be AG Day without ribbons! Also a huge thanks to Ro and Coro Vets for all the spot prizes. Much appreciated and the kids love them!





AG Day
Animal
creations





Neroli Matautia
 Dorette Hartley
 Jo Derham
 Tammy Stevens
 Jude Fletcher
 Caitlin Kneebone
 Sarah Cannell
 Emily Croker
 Maren Johansen
 Brendon Carroll
 Briar Scott
 Vanessa Maunder
 Sharon Samson
 Michelle Burr
 Tanya Giles
 Scott Spicer

STAFF EMAIL ADDRESSES

nmatautia@east.school.nz
dhartley@east.school.nz
jderham@east.school.nz
tstevens@east.school.nz
jfletcher@east.school.nz
ckneebone@east.school.nz
scannell@east.school.nz
ecroker@east.school.nz
mjohansen@east.school.nz
bcarroll@east.school.nz
principal@east.school.nz
vmaunder@east.school.nz
office@east.school.nz
mburr@east.school.nz
tgiles@east.school.nz
sspicer@esat.school.nz

Room 1
 Room 2
 Room 3
 Room 4
 Room 5
 DC
 DC
 DC
 Room 8
 Room 9
 Principal
 Deputy Principal
 Admin
 Support
 Support
 Support

BEST START PROGRAMME FOR NEW ENTRANTS

If your New Entrant child has enrolled this term, or will be enrolling this term, please contact Briar about securing your place in our awesome workshops.

Best Start Waihi East



Thurs 18 November 11-30am-12.30pm.
Weds 23 November 11.30am-12.30pm.

Contact Briar on principal@east.school.nz
or 863 8693.



Term 4 2021 review topics

Reviewers

Harassment

The main topics to focus on are **Harassment** and **Harassment Complaints Procedure**.

We also encourage feedback on **Defamation** and **Personal Grievance**.

There is also a **Definitions of Harassment** section, which gives context for the other harassment policies and procedures.

- Board
- Staff

Religious Education / Religious Instruction

(If you don't have an active link above, the school does not have this topic.)

If you have the optional **Religious Observances** topic, review that too.

- Board
- Staff
- Parents

Māori Educational Success

If you have a tailored topic, it may be called **Improving Educational Outcomes for Māori Students**.

- Board
- Staff
- Parents

School Docs

Signed off and in use.

www.schooldocs.co.nz

Username - waihieast

password - eastpolicy

Instructions for reviewers

1. Follow the link to each policy in the table above.
2. Read the policy.
3. Click the red Policy Review icon at the right-hand top corner of the page. A new screen will appear.
4. Select your role (board member, staff member, or parent/caregiver) from the drop-down list.
5. Enter your name (optional).

Submit your ratings and comments.

If you don't have internet access, school office staff can easily provide you with printed copies of the policy and the review form.

GIVE IT A GO PROGRAMME

6 WEEKS

YEAR 1-4

SUPER SMASH HUB



NORTHERN DISTRICTS CRICKET

CATCH! THROW! STRIKE!

LOCATION	DAY	START DATE	TIME
Pohlan Park, Matamata	Monday	18 Oct 2021	4.00pm
Te Aroha College, Te Aroha	Wednesday	27 Oct 2021	4.30pm
Rhodes Park, Thames	Friday	29 Oct 2021	4.00pm
Moewai Sports Park, Whitianga	Monday	01 Nov 2021	3.30pm
Hauraki Plains College, Ngatea	Monday	01 Nov 2021	4.00pm
Paeroa College, Paeroa	Wednesday	03 Nov 2021	4.30pm
Waihi College, Waihi	Friday	05 Nov 2021	4.00pm
Morrinsville Recreation Ground	Friday	05 Nov 2021	4.30pm
Albert Park, Te Awamutu	Friday	05 Nov 2021	5.30pm
John Kerkof Park, Cambridge	Friday	05 Nov 2021	5.30pm
Whangamata Area School	Wednesday	10 Nov 2021	3.15pm

REGISTER VIA NDCRICKET.CO.NZ/PLAY - TURN OVER FOR MORE INFORMATION

Looking for a career change?
Love working with children?



Save time by not sitting in traffic and earn up to \$1000 per week while working from home



- FREE ECE Level 4 Training
- FREE Flu Jab
- FREE First Aid Certificate
- FREE Police Vetting
- FREE Annual Subscription to the Homebased Association
- Educa Online Portfolio Support
- Playgroups and Excursions
- Toy Library

Looking for Quality Childcare?

- Small Group Size
- Personal Relationships
- Community Adventures
- Subsidised Fees*



p: 0800 536 627
w: jemmas.co.nz
e: info@jemmas.co.nz

JEMMa's
Home-based Education and Childcare

* Terms and Conditions Apply

THANKS TO OUR GREAT DUFFY BOOKS SUPPORTERS.

lawn-mowing

Nani de Ocampo & Ruth Scott
Owner/Operators

07 863 7320 HOME
021 127 0635 MOBILE
0800 800 286 TOLL FREE

waihi.crewcut@gmail.com EMAIL

CrewcutWaihi

www.crewcut.co.nz WEB

CREWCUT

LAWN & GARDEN

THANKS TO OUR GREAT DUFFY BOOKS SUPPORTERS.
Your donations mean more books for kids.



TREE SERVICES

- SPECIALIST IN TREE PRUNING AND REMOVAL
- STUMP GRINDING
- SECTION CLEARING
- HEDGE TRIMMING
- QUALIFIED ARBORIST



CLARK
TREE CARE

JOEL CLARK
0212366713

WaihiFamilyDoctors

"Providing friendly and Quality healthcare from our family to yours"

Phone (07) 863 2112
Phone the same number for out of hours care

Opening hours: Monday – Friday
8:30am – 5:00pm

Burrs
FURNITURE MOVERS

Small or large moves. Home or Business.
North Island wide. Packing Service.
Available seven days.

MIKE BURR 0800 863 8510 • 027 269 3160
info@burrs.co.nz • www.burrs.co.nz



gold fm

"Hear the difference"

Waihi 96.4 Waihi Beach 99.4
Paeroa 88.0 Coromandel 96.4
Thames 88.0 Matarangi 99.1
Cook's Beach 99.1 Whitianga 99.1

www.goldfm.co.nz



Ryan Giles
Mortgage Adviser

T 07 863 3111 **M** 022 077 5572
E ryan.giles@mikepero.co.nz
A 352 Te Rapa Road, Hamilton 3200
W mikepero.co.nz/ryan-giles



mike Pero
Mortgages • Insurance • Finance

Find out what
your home is

really
worth

I can give you a
Free Expert Appraisal

Craig Thorne
027 224 9843

LJ Hooker

Kotikoti Waihi & Waihi Beach

Only Realty New Zealand Limited (MRINS)
Licensed Real Estate Agents (REA 2006)



Principal: Briar Scott
Ph: 07 863 8693
Absentees: 021 0258 4817
Email Office for general enquires:
office@east.school.nz
Email: principal@east.school.nz
www.waihieast.school.nz
Waihi East Primary School,
8 Donnelly Street, WAIHI 3610
PO Box 129, WAIHI 3641

Copyright © 2016 WAIHI EAST SCHOOL.
All rights reserved.